

Contents lists available at ScienceDirect

Fundamental Research

journal homepage: <http://www.keaipublishing.com/en/journals/fundamental-research/>

Article

Organic carbon sink dynamics and carbon sink-source balance in global lakes during the Anthropocene

Fanfan Meng^{a,b,1}, Ang Hu^{a,b,1}, Hao Wu^{a,c}, Kyoung-Soon Jang^d, Bo Liu^e, Tianheng Gao^{a,c}, Qinglong Wu^{a,b}, Jianjun Wang^{a,b,*}^a Key Laboratory of Lake and Watershed Science for Water Security, Nanjing Institute of Geography and Limnology, Chinese Academy of Sciences, Nanjing 210008, China^b University of Chinese Academy of Sciences, Beijing 100049, China^c College of Oceanography, Hohai University, Nanjing 210098, China^d Bio-Chemical Analysis Team, Korea Basic Science Institute, Cheongju 28119, South Korea^e School of Geographic Science, Nantong University, Nantong 226019, China

ARTICLE INFO

Article history:

Received 19 January 2024

Received in revised form 28 March 2024

Accepted 24 April 2024

Available online xxx

Keywords:

Organic carbon burial
Greenhouse gas emissions
Carbon sink dynamics
Carbon sink-source balance
Anthropogenic activity

ABSTRACT

The carbon burial and greenhouse gas emissions of lakes are pivotal in the global carbon cycle to offset or accelerate global warming. However, their balance or the magnitude of anthropogenic increase of carbon burial remains uncertain in global lakes. Here, we quantified the carbon sink dynamics and the sink-source balance in global lakes with effect-size metrics, that is, the log-response ratio of organic carbon burial between post-1950 and pre-1900 periods and the carbon balance ratio between carbon burial and greenhouse gas emissions, respectively. The organic carbon burial ratios revealed an average increase of 2.45 times in carbon burial rates during the Anthropocene, while the carbon balance ratios were negative in 82.68% of lakes, indicating that most lakes had lower burial rates than emission rates and acted as carbon sources rather than carbon sinks. The organic carbon burial ratios exhibited a significantly decreasing latitudinal trend and were mainly influenced by lake's trophic state with the explained variation of 44.79%. They were also indirectly influenced by climate, lake morphometry, and catchment properties through their interactions with the lake's trophic state. The carbon balance ratios, however, showed a nonsignificant latitudinal trend. They were primarily affected by lake catchment properties with the explained variation of 26.21% and were also indirectly affected by climate variables via the interactions with catchment properties. Overall, our study highlights that human activities such as lake eutrophication and catchment changes have altered the carbon sink and source in global lakes during the Anthropocene, and are essential drivers for future evaluations of lake carbon budgets.

1. Introduction

Lakes disproportionately affect the global carbon cycle relative to their area as a highly efficient carbon sink and an important source of greenhouse gases. Although lakes cover less than 4% of Earth's nonglaciated land area [1], they have the potential to store approximately 25%–40% of the organic carbon that is buried in marine sediments [2–4]. Lakes are also an important source of greenhouse gases (GHG), which equals to nearly 20% of the whole global CO₂ fossil fuel emissions into Earth's atmosphere [5]. Notably, the estimates of carbon sink and source in global lakes exhibited variability across different literature (Fig. 1). For instance, organic carbon burial varies with nearly three times differences from 0.04 to 0.12 Pg C yr⁻¹ [6,7]. The CO₂ emis-

sions vary with nearly six times differences from 0.11 to 0.64 Pg C yr⁻¹ [8,9], while the CH₄ emissions show less variations with a range of 0.01 to 0.11 Pg C yr⁻¹ [10,11]. Whether lakes act as net sinks or net sources for their regional carbon neutral roles is primarily determined by the balance between organic carbon burial in the sediments and the evasion of inorganic carbon into the atmosphere. However, such a balance (i.e., carbon sink-source balance) and the temporal variability of organic carbon burial (i.e., carbon sink dynamics) during the Anthropocene remain uncertain for global lakes.

Characterizing the temporal changes of carbon burial in lakes during the Anthropocene is critical to constrain the dynamics of global carbon sinks given the increasing and widespread human disturbance [7]. Lake organic carbon burial is promoted by climate warming and anthro-

* Corresponding author.

E-mail address: jjwang@niglas.ac.cn (J. Wang).¹ These authors contributed equally to this work.<https://doi.org/10.1016/j.fmre.2024.04.018>2667-3258/© 2024 The Authors. Publishing Services by Elsevier B.V. on behalf of KeAi Communications Co. Ltd. This is an open access article under the CC BY-NC-ND license (<http://creativecommons.org/licenses/by-nc-nd/4.0/>)

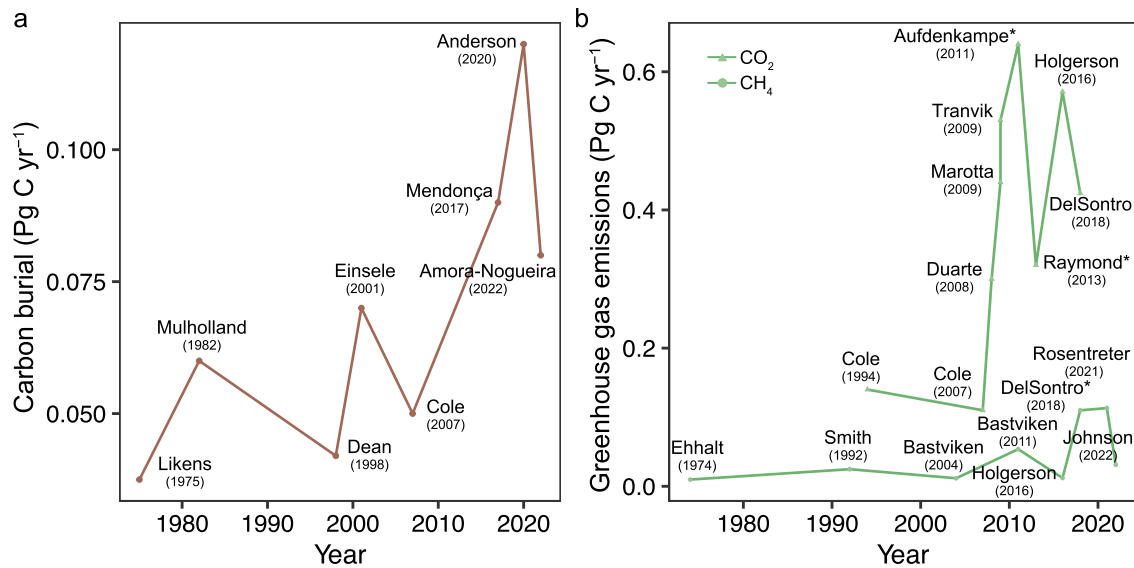


Fig. 1. The synthesis of organic carbon burial (a) and greenhouse gas emissions (b) in global lakes based on various literature sources. The inserted text indicates the first author and the publication year of the literature. The studies indicated by * are based on global lakes and reservoirs. The data and corresponding references presented in the figure can be found in Table S3.

pogenic disturbance via increasing autochthonous production and the inputs of allochthonous carbon from the catchments [12]. For instance, the temperature at ecosystem level has a positive effect on lake organic carbon burial [13], while incubation experiments show decreased carbon burial in lakes with increasing temperature [14]. The increasing organic carbon burial observed during the Anthropocene could not be fully explained by climate alone, and thus other environmental drivers, such as human-induced landscape changes, are proposed to be responsible [13]. Anthropogenic activities, including land-cover change and extensive agriculture, could impact organic carbon burial in lakes by causing eutrophication and increasing inputs of terrestrially derived organic matter [15,16]. Eutrophication, induced by excessive nutrient input, could increase the amount of fresh organic carbon available for subsequent depositional processes [17]. For instance, eutrophication is the primary driver of the elevated carbon burial rates in European lakes, as indicated by the strong correlation between total phosphorus and the burial rates [18]. Nevertheless, nutrient enrichment could also enhance heterotrophic bacterial activities and alter microbial community composition, potentially increasing the mineralization of organic carbon and thus reducing organic carbon burial [19,20].

Furthermore, it remains largely unknown regarding the balance between carbon burial and GHG emissions in individual lakes, i.e., their roles in regional carbon budgets, and the major drivers behind this balance [21]. Such carbon sink-source balance has been previously investigated in different terrestrial and aquatic environments, such as forests, grasslands, arable lands, peatlands, and oceans [22]. For lake ecosystems, they are usually supersaturated in CO₂, acting as net carbon sources to the atmosphere. However, the extent to which carbon burial could offset these CO₂ emissions exhibits significant spatial variability, influenced by factors such as latitude, climate, and lake types. For instance, the ratios of lake carbon emissions to burial in high-latitude regions are ten times higher in boreal lakes compared to subarctic-arctic lakes [23]. The role of individual lakes could be overlooked when comparing organic carbon burial to CO₂ emissions at regional scales, such as catchments based on a coastal segmentation [24,25]. Moreover, climate change and human activities could significantly affect lake carbon sink-source balance, but their impacts are generally understudied [12,26]. For instance, climate warming could enhance lake primary production and stimulate CO₂ fixation, yet it might also lead to higher organic carbon mineralization [14]. Meanwhile, warming trends could facilitate agricultural expansion and enhance nutrient availability in high-latitude

regions, potentially reducing net CO₂ production and increasing organic carbon burial [23].

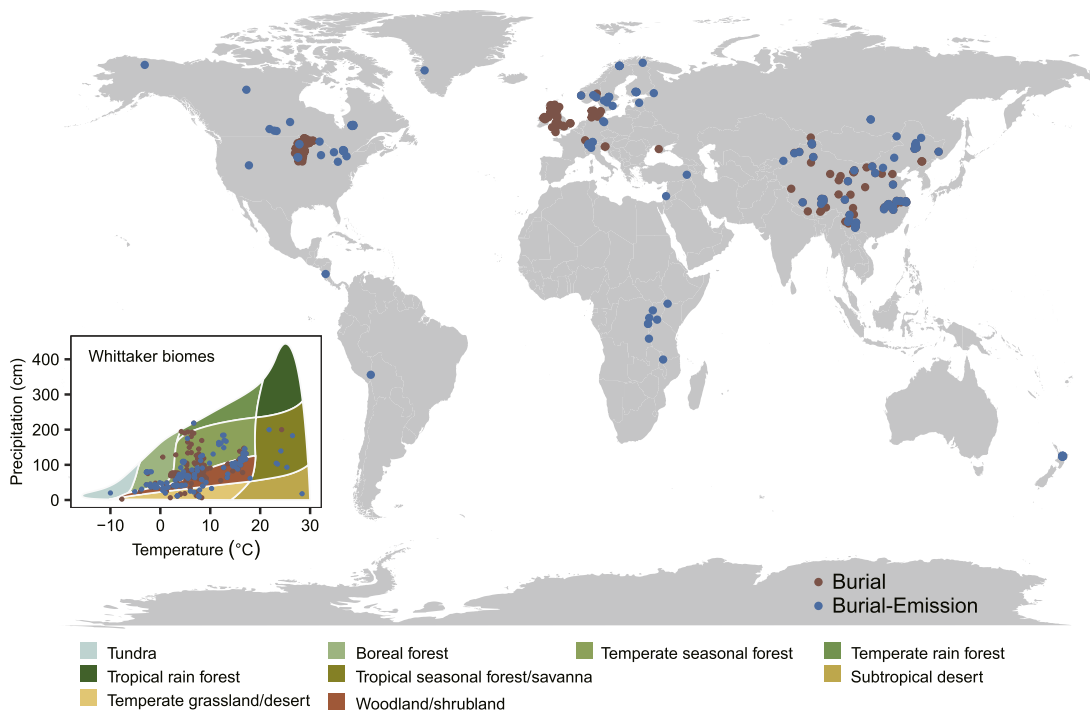
Under the combined influence of climate change and intensified anthropogenic activities, lakes are playing more important roles in regulating the regional carbon budgets by increasing carbon sedimentation and mediating the balance between carbon sinks and sources. Here, we quantified carbon sink dynamics and carbon sink-source balance in global lakes, and evaluated how they were influenced by multiple drivers. Specifically, we obtained organic carbon burial and CO₂ emission rates from 423 global lakes reported in previous literature, including 286 lakes with long-term carbon burial rates over the last 100–200 years (Table S1), and 137 lakes with pairwise short-term carbon burial rates and contemporary CO₂ emission rates (Table S2). We developed two effect-size metrics, namely the carbon burial ratios and carbon balance ratios, to quantify the carbon sink dynamics and carbon sink-source balance, respectively. We further evaluated the relative importance of nature and anthropogenic drivers in explaining carbon sink dynamics and sink-source balance across global scales. These hierarchical drivers could be categorized as climate variables, lake morphometry, lake catchment properties, and lake trophic state (Fig. 2c). We expected that autochthonous and allochthonous productions, represented by the trophic state of the lake and the carbon inputs from the catchments, respectively, could strongly influence the carbon sink dynamics and sink-source balance. We further hypothesized that climate and lake morphometry could directly mediate the carbon sink dynamics and sink-source balance, and could also have indirect influence through their interactions with lake trophic state and catchment properties. The synthesis of these hierarchical drivers could effectively illustrate the carbon sink dynamics and sink-source balance in the global lakes and provide valuable insights into the mechanisms driving carbon cycling in lake ecosystems.

2. Methods

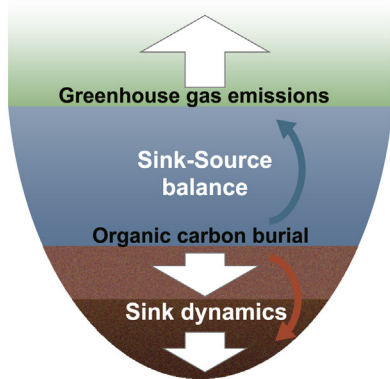
2.1. Data compilation of organic carbon burial and CO₂ emission rates

We compiled organic carbon burial and greenhouse gas emissions data from 423 global lakes, which mainly derived from published sources (Tables S1, S2). These lakes exhibit varying characteristics in latitude, climate, lake morphometry, lake catchment properties, and lake trophic state. This comprehensive dataset allows us to examine the rel-

a



b



c

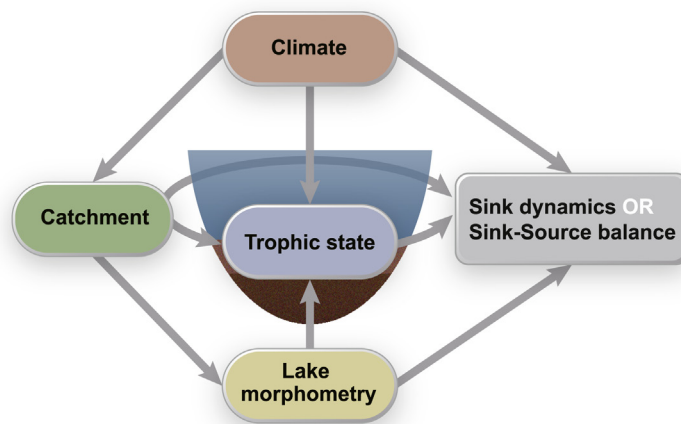


Fig. 2. The organic carbon burial rates and greenhouse gas emission rates across global lakes (a), computation of carbon burial ratios and carbon balance ratios (b), and hypothesized drivers and their pathways (c). (a) The map of global lakes with organic carbon burial and greenhouse gas emission rates. The color of the points represents lakes with long-term organic carbon burial rates over the past 100–200 years (brown) and lakes with pairwise CO_2 emissions and short-term organic carbon burial rates during the Anthropocene (blue). (b) Schematic illustration of the quantification of carbon sink dynamics and carbon sink-source balance. (c) Hypothesized drivers and their pathways affecting lake carbon sink dynamics and carbon sink-source balance. These environmental drivers include climate variables, lake morphometry, lake catchment properties, and lake trophic state. Inset figure in (a) shows Whittaker's biome classification of lake locations, showing the mean annual temperature (MAT, °C) and mean annual precipitation (MAP, cm) for all 423 lakes. The comprehensive lists of collected data for this study are displayed in Table S1 and Table S2.

ative importance of natural and anthropogenic drivers of lake carbon sink dynamics and carbon sink-source balance.

The carbon burial dataset consisted of 286 distinct lake observations of long-term (i.e., the last 100–200 years) sediment focusing corrected organic carbon burial rates, integrating both newly collected and previously published regional synthesis data (see Table S1 for a list of sources). Our dataset was restricted to rates derived from ^{210}Pb dating methods to avoid bias due to the large differences in organic carbon burial estimated via other methods, such as ^{14}C dating and sediment traps [27]. To ensure consistent dating and organic carbon burial calculations across all sediment cores, we only selected those records that provided both ^{210}Pb and organic carbon concentrations at approximately

decadal resolutions [7]. Our analysis relied exclusively on whole-system organic carbon burial rates (i.e., a single spatially resolved rate for each system), thus we used the average value if data on whole-system organic carbon burial from the same lake were available in different publications. Artificial reservoirs were excluded from this study due to their limited data of long-term organic carbon burial rates worldwide and their distinctive characteristics compared to natural lakes. For instance, reservoirs could exhibit higher carbon burial due to catchment instability, high erosion rates, and more favorable conditions for organic carbon preservation [7,25].

The carbon burial-emission dataset included 142 pairwise data of CO_2 emission and organic carbon burial rates from 137 different lakes,

which is the largest dataset available so far (see Table S2 for a list of sources). These lakes are widely distributed in spatial scales and represent the majority of Whittaker's biome classification [28] (Figs. 2 and S4). For estimating CO₂ emissions across the air-water interface, we calculated the average value using data from the same lake across different seasons, provided that such data were available in various publications. For estimating carbon burial across the sediment-water interface, we used short-term organic carbon burial rates, specifically those of post-1950, if multiple estimates of burial rates for the same lake from different periods were available. Despite the imprecise temporal alignment between carbon burial and contemporary CO₂ emissions, the carbon burial rates of post-1950 are more stable and representative, considering the potential fluctuations due to mineralization in the initial years after organic carbon deposition [29]. However, it is challenging to obtain more data due to the heterogeneity of data sources for organic carbon burial and CO₂ emissions, and the lack of temporal alignment between these two variables.

2.2. Calculating organic carbon burial ratio and carbon balance ratio

Organic carbon burial rates were divided into three periods based on global anthropogenic activity before and after the beginning of the Anthropocene: pre-1900, 1900-1950, and post-1950 [30]. We considered pre-1900 as background or very low disturbance, with limited global atmospheric emissions. Human population and industrialization increased during the transitory period of 1900-1950. We considered post-1950 as the modern period, reflecting the Post-World War II rapid increase in both human population and industrialization. In fact, the post-1950 acceleration in the Earth System indicators, known as the Great Acceleration, is one of the most convincing candidates for the start of the Anthropocene [31].

We introduced an effect-size metric, the log-response carbon burial ratio, to quantify the magnitude and direction (i.e., positive, or negative) of lake organic carbon burial change during the Anthropocene (Box 1). This ratio was calculated by comparing the modern rate of organic carbon burial (post-1950) to baseline value (pre-1900):

$$\text{Carbon burial ratio} = \ln \left(\frac{\text{post} - 1950}{\text{pre} - 1900} \right) \quad (1)$$

where pre-1900 and post-1950 are the organic carbon burial rates of lakes before 1900 and 1950 to present, respectively. Positive and negative values of organic carbon burial ratios indicate increases and decreases in organic carbon burial rates over time, respectively, while a zero organic carbon burial ratio suggests no temporal changes. Larger

absolute values of the burial ratio indicate greater temporal changes in organic carbon burial rates between the two periods.

We further applied the log-response carbon balance ratios to investigate the role of each lake in regional carbon cycling (Box 1). This ratio was calculated by comparing short-term organic carbon burial rates to contemporary CO₂ emissions:

$$\text{Carbon balance ratio} = \ln \left(\frac{\text{Carbon burial}}{\text{CO}_2 \text{ emission}} \right) \quad (2)$$

The carbon balance ratio is based on mass balance point of view, given that comparable amounts of carbon are buried in sediments and emitted as gas from lakes worldwide. It should be noted that the carbon balance ratios are employed as a preliminary evaluation of the role of lakes in regional carbon cycling. Although there is a lack of precise temporal alignment between carbon burial and CO₂ emissions, this approach represents one of the viable methods for comparing the two net vertical processes within lakes: evasion versus sedimentation [23,25,29]. Specifically, lakes with positive carbon balance ratios indicate that carbon burial exceeds CO₂ emissions, acting as carbon sinks, while lakes with negative ratios indicate that carbon burial is lower than CO₂ emissions, acting as carbon sources. It should be noted that we excluded 15 lakes with negative CO₂ emission rates, which accounted for 10.95% of the 137 lakes. This is because it is not mathematically applicable to include negative CO₂ emissions in the carbon balance ratio calculation. Moreover, there is no need to apply the carbon balance ratios to quantify the carbon sink-source balance of the lakes with negative CO₂ emissions, because they are typically characterized as net autotrophic ecosystems and could be classified as carbon sinks, that is, higher CO₂ uptake by primary producers than the release via ecosystem respiration [32].

2.3. Data compilation of natural and anthropogenic drivers

Besides the carbon burial ratios and carbon balance ratios, the datasets also included natural and anthropogenic variables for each lake when available. A total of 11 explanatory variables were collected, including mean annual temperature (MAT), mean annual precipitation (MAP), lake area, mean average depth, maximum depth, nitrogen and phosphorus fertilizer use, Normalized Difference Vegetation Index (NDVI), chlorophyll *a*, total phosphorus (TP), and total nitrogen (TN). We categorized these explanatory variables into four distinct groups, that is, climate variables (MAT and MAP), lake morphometry (lake area, mean average depth, and maximum depth), lake catchment properties

Box 1 | Glossary of terms for quantifying carbon sink dynamics and carbon sink-source balance

Effect-size metrics: The statistical metrics to quantify the magnitude and direction of the relationship between two sets of variables or groups. The log response ratio (LRR) is one of effect-size statistics and is calculated as the log proportionate change in the means of a treatment and control group.

Organic carbon burial ratio: The organic carbon burial ratio is a log response ratio used to quantify the magnitude and direction of changes in lake organic carbon burial during the Anthropocene. For instance, the organic carbon burial ratio could be calculated for organic carbon burial between the pre-1900 and post-1950 periods. Positive values of the organic carbon burial ratio indicate an increase in organic carbon burial rates over time, while negative values suggest a decrease. A ratio of zero indicates no change in organic carbon burial rates.

Organic carbon sink dynamics: The temporal changes in the burial or accumulation of organic carbon within lake sediments during a defined period. These dynamics, quantified by the organic carbon burial ratios, indicate the potential contributions of lakes to regional and global carbon sinks.

Carbon balance ratio: A log response ratio that compares the difference between organic carbon burial and greenhouse gas (GHG) emissions, and measures the balance between carbon sink and source in a lake. A positive value of the carbon balance ratio indicates a higher carbon burial rate than carbon emission in a lake, resulting in a positive contribution to the regional carbon stock. Conversely, a negative value suggests that a lake has a higher carbon emission rate than carbon burial, resulting in a negative contribution to the regional carbon stock. A ratio of zero indicates no contribution to carbon stock.

Carbon sink-source balance: The balance between carbon burial and gaseous carbon emissions in lakes. This balance, quantified by the carbon balance ratio, reflects the role of lakes in regional and global carbon budgets.

(nitrogen and phosphorus fertilizer use and NDVI), and lake trophic state (chlorophyll *a*, TP, and TN) (Fig. 2c; Table S4).

The climate variables and lake morphometry were considered as natural drivers. For climate variables, we extracted MAT and MAP for each lake from previous literature when available (Tables S1, S2). The unavailable climatic variables were derived by using latitude and longitude from Worldclim database version 2 for 1970–2000 with a spatial resolution of approximately 30 s (~1 km²) [33]. For lake morphometry, we extracted lake area, mean average depth, and maximum depth from previous literature when available (Tables S1, S2). The unavailable variables were extracted from online repositories, such as Minnesota Pollution Control Agency (<https://www.pca.state.mn.us/>).

The lake catchment properties and lake trophic state were considered as anthropogenic drivers. For lake catchment properties, we included the nitrogen and phosphorus fertilizer use data and Normalized Difference Vegetation Index (NDVI) to examine the impact of allochthonous carbon on the carbon sink dynamics and carbon sink-source balance in lakes. The fertilizer use data and NDVI, as indicators of terrestrial productivity in lake catchments, have been applied to predict organic carbon burial in lakes worldwide [7] and greenhouse gas concentrations across boreal lakes [34]. Fertilizer application rates for each lake were derived by using latitude and longitude from 0.5-decimal degree interpolated averages of nitrogen and phosphorus fertilizer application spanning from 1994 to 2001 [35]. These data are publicly available as part of NASA's Socioeconomic Data and Applications Center (SEDAC) at <http://sedac.ciesin.columbia.edu/data/collection/ferman-v1>. The average NDVI data for each lake from 2000 to 2023 was derived by using latitude and longitude from MODIS Terra Vegetation Indices MOD13Q1 v061 product (<https://lpdaac.usgs.gov/data/>). This product provides a temporal resolution of 16 days and a spatial resolution of 250 m [36]. For lake trophic state, we included important and frequently used variables, including chlorophyll *a*, TP, and TN, to indicate lake eutrophication status and examine the effect of autochthonous carbon production on the carbon sink dynamics and carbon sink-source balance [37]. The chlorophyll *a*, TP, and TN were extracted from previous literature when available (Tables S1, S2). The unavailable variables were extracted from online repositories, such as Minnesota Pollution Control Agency (<https://www.pca.state.mn.us/>), and a database of chlorophyll *a* and water chemistry in freshwater lakes [38].

2.4. Statistical analysis

We conducted linear models to explore the distribution patterns of carbon burial rates, CO₂ emission rates, carbon burial ratios, and carbon balance ratios along latitudinal gradients. We also employed linear models to explore the relationships between carbon burial ratios, carbon balance ratios, and both natural and anthropogenic variables. Prior to analyses, explanatory variables were log-transformed to improve normality when necessary. This analysis was performed using the R package “stats” V 4.2.2.

To further evaluate the key drivers of carbon burial ratios and carbon balance ratios, we employed random forest analysis [39] and structural equation modelling (SEM) [40]. First, random forest analysis was conducted to quantify the relative importance of climatic variables, lake morphometry, lake catchment properties, and lake trophic state on carbon burial ratios and carbon balance ratios. The importance of each predictor variable was determined by evaluating the decrease in prediction accuracy (that is, increase in the mean square error between observations and out-of-bag predictions) when the data for that predictor were randomly permuted. The accuracy importance measure was computed for each tree and averaged over the forest (5,000 trees). The contributions of predictor variables were scaled to sum to 100. This analysis was conducted using the R package randomForestSRC V3.2.3 [41].

Second, SEM [40] was used to explore the interactive effects of natural and anthropogenic drivers on carbon sink dynamics and carbon sink-source balance. The hypothesized links were developed based on

our expectation that lake trophic state and lake catchment properties could strongly influence carbon sink dynamics and sink-source balance. We further expected that climate variables and lake morphometry could directly mediate the carbon sink dynamics and sink-source balance, and could also have indirect influence through their interactions with lake trophic state and catchment properties (Fig. 2c). Before modeling, all variables in the SEMs were z-score transformed to allow comparisons among multiple predictors and models. Consistent with previous studies [42], we used composite variables to capture the collective effects of climate variables, lake morphometry, lake catchment properties, and lake trophic state. The candidate observed indicators were shown in Table S4. The indicators for each composite were selected based on the multiple regressions for carbon burial ratios or carbon balance ratios (Table S5). Based on all the hypothesized paths among composite variables (that is, full model; Fig. 2c), we examined all alternative models and chose the final model that met the model fit statistics with the low AIC value [43]. The detailed modeling fit indices for all alternative models were provided in Table S6. We implemented SEMs using the R package lavaan V.0.6-15 [44]. It is worth noting that the sample size may vary across different analyses due to missing environmental data.

3. Results

3.1. Lake organic carbon burial and CO₂ emission rates

In the 286 global lakes, the organic carbon burial rates varied widely, ranging from 0.01 to 223.30 g C m⁻² yr⁻¹ across individual lakes of all periods in three regions: China (*n* = 74), Europe (*n* = 73), and the USA (*n* = 139) (Fig. S1). Average organic carbon burial rates in China (9.53 g C m⁻² yr⁻¹) were nearly four times lower than those in Europe and the USA (40.94 and 35.16 g C m⁻² yr⁻¹, respectively). During the Anthropocene, organic carbon burial substantially increased from pre-1900 to post-1950, but also showed variations across the studied lakes. Specifically, the average organic carbon burial rates increased from 14.33 g C m⁻² yr⁻¹ for pre-1900 to 22.45 g C m⁻² yr⁻¹ for 1900-1950, and further to 43.94 g C m⁻² yr⁻¹ for post-1950. The magnitude of the mean increase in burial rates from pre-1900 to post-1950 varied among regions: the lowest increase, 9.04 g C m⁻² yr⁻¹, was observed in China, while the highest increase, 39.61 g C m⁻² yr⁻¹, occurred in Europe.

In the 137 global lakes, the carbon burial rates had a mean of 21.98 g C m⁻² yr⁻¹ and ranged from 0.01 to 204.40 g C m⁻² yr⁻¹. Meanwhile, the carbon emission rates, represented by CO₂, had an average of 60.26 g C m⁻² yr⁻¹ and a range of -97.10 to 411.71 g C m⁻² yr⁻¹ (Fig. 3b). The carbon burial rates, but not the carbon emission rates, in China (*n* = 48), Europe (*n* = 32), and the USA (*n* = 13) were significantly higher than those in other regions (*n* = 49), such as Africa, South America, and Oceania. However, nonsignificant differences were observed in the carbon burial and emission rates among China, Europe, and the USA (Fig. S2a, b). There was also no significant relationship between carbon burial and emission rates, but the CO₂ emissions showed relatively higher rates than the organic carbon burial (*P* < 0.001, Fig. S3).

3.2. Organic carbon burial ratio and carbon balance ratio across lakes

We developed organic carbon burial ratios to quantify the lake carbon sink dynamics during the Anthropocene. The carbon burial ratios had a mean of 0.97 and ranged from -0.69 to 3.84 across individual lakes. These ratios revealed that the organic carbon burial rates increased on average 2.45 times from pre-1900 to post-1950. The carbon burial ratios in the USA (mean 1.03) were significantly higher than those in Europe (mean 0.78). However, there were no significant differences between the carbon burial ratios in the USA and China (mean 0.93) (Fig. S1d). The carbon burial ratios between post-1950 and pre-1900 were higher than those between 1900-1950 and pre-1900 (mean 0.39),

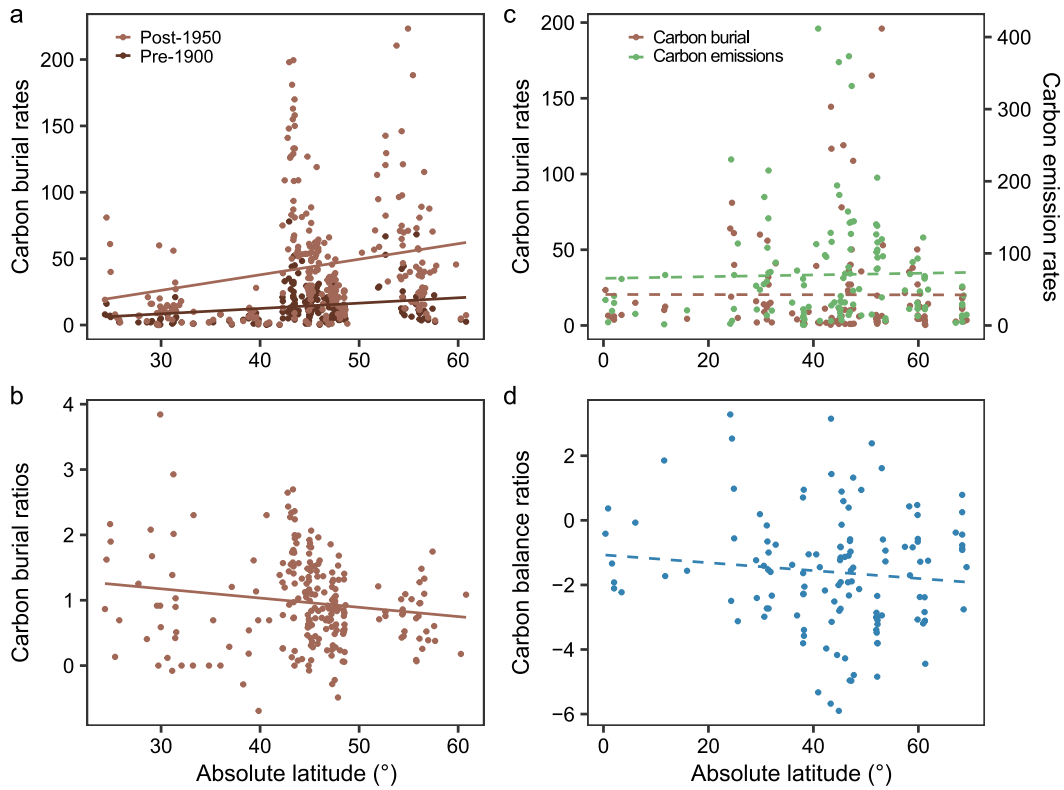


Fig. 3. Geographic patterns of lake organic carbon burial and carbon emissions. (a) Organic carbon burial rates ($\text{g C m}^{-2} \text{ yr}^{-1}$) in lake sediments. Dark brown: the pre-1900 period ($n = 228$, $R^2 = 0.05$); Brown: the post-1950 period ($n = 286$, $R^2 = 0.05$). (b) Carbon burial ratios ($n = 228$, $R^2 = 0.02$) between the two periods of post-1950 and pre-1900; (c) The pairwise organic carbon burial rates ($\text{g C m}^{-2} \text{ yr}^{-1}$) and greenhouse gas emission rates ($\text{g C m}^{-2} \text{ yr}^{-1}$). Green: carbon emission rates ($n = 127$); Brown: organic carbon burial rates ($n = 127$). (d) Carbon balance ratios ($n = 127$) between organic carbon burial rates and carbon emission rates. Solid lines represent statistically significant linear models ($P \leq 0.05$) and dashed lines represent nonsignificant linear models ($P > 0.05$).

indicating accelerated organic carbon burial in global lakes in recent decades.

We further developed carbon balance ratios to reflect the lake carbon sink-source balance. The carbon balance ratios had a mean of -1.60 and ranged from -5.90 to 3.28 . The average ratio was highest in the USA (-0.59) and lowest in China (-1.93). The carbon balance ratios in Europe, with an average of -1.17 , were significantly higher than those in China, but showed nonsignificant difference with those in the USA. Negative carbon balance ratios were observed in 82.68% of lakes, indicating that carbon burial rates were lower than CO_2 emission rates. This suggests that most lakes act as carbon sources rather than sinks in regional carbon cycling. However, organic carbon burial could still offset, on average, 21.55% of CO_2 emissions in these lakes. This is similar to a recent global assessment, which revealed that the global organic carbon sink estimate of 80 Tg C yr^{-1} corresponds to about 27% of the global CO_2 emissions estimated at 292 Tg C yr^{-1} from lakes to the atmosphere [27].

The organic carbon burial ratios, but not the carbon balance ratios, showed predictable patterns along the latitudinal gradient. For the organic carbon burial ratios, there was a significantly decreasing trend towards high latitudes ($P < 0.05$, Fig. 3b), which was different from the burial rates for both periods of pre-1900 and post-1950 ($P < 0.05$, Fig. 3a). It is worth noting that the organic carbon burial ratios showed weaker variation than the burial rates along the latitudinal gradient, with a slope of -0.014 for the burial ratios, whereas the higher slopes of 0.403 and 1.171 for the burial rates during the pre-1900 and post-1950 periods, respectively. For the carbon balance ratios, however, there was no clear latitudinal pattern, with the pairwise carbon burial rates ($P > 0.05$) and the CO_2 emission rates ($P = 0.053$) also showed no significant relationship with latitude (Fig. 3c, 3d).

3.3. Drivers on organic carbon burial ratio and carbon balance ratio

We further examined the influence of environmental drivers, such as climate variables, lake morphometry, lake catchment properties, and lake trophic state, on the organic carbon burial ratios and the carbon balance ratios (Fig. 4). The organic carbon burial ratios showed a significant relationship with key biogeochemical indicators of lake trophic state, including chlorophyll a ($R^2 = 0.11$) and total phosphorus (TP, $R^2 = 0.09$). Specifically, these ratios increased significantly with higher chlorophyll a and TP ($P < 0.05$). The burial ratios also had significant positive relationships with nitrogen and phosphorus fertilizer application ($R^2 = 0.08$ and 0.10 , respectively), but a negative relationship with normalized difference vegetation index (NDVI, $R^2 = 0.02$) in the catchment, indicating complex connections between organic carbon burial and terrestrial materials from surrounding catchments. Further, there was a positive relationship between carbon burial ratios and regional climate, such as mean annual temperature (MAT, $R^2 = 0.08$), which is consistent with their decreasing latitudinal pattern. However, lake morphometry, such as lake maximum depth, had a significant negative relationship with burial ratios with R^2 of 0.08 (Figs. 4a and S5a).

The carbon balance ratios were primarily linked to lake catchment properties and trophic state, including nitrogen fertilizer application ($R^2 = 0.03$), chlorophyll a ($R^2 = 0.12$), and total nitrogen (TN, $R^2 = 0.07$). Meanwhile, the carbon balance ratios increased significantly with increases in MAT ($R^2 = 0.05$) and mean annual precipitation (MAP, $R^2 = 0.03$). However, there was no significant relationship between carbon balance ratios and lake morphometry, such as lake area, average depth, and maximum depth (Figs. 4b and S5b).

For the organic carbon burial ratios, the most important explanatory variable revealed by random forest models was chlorophyll a , which is

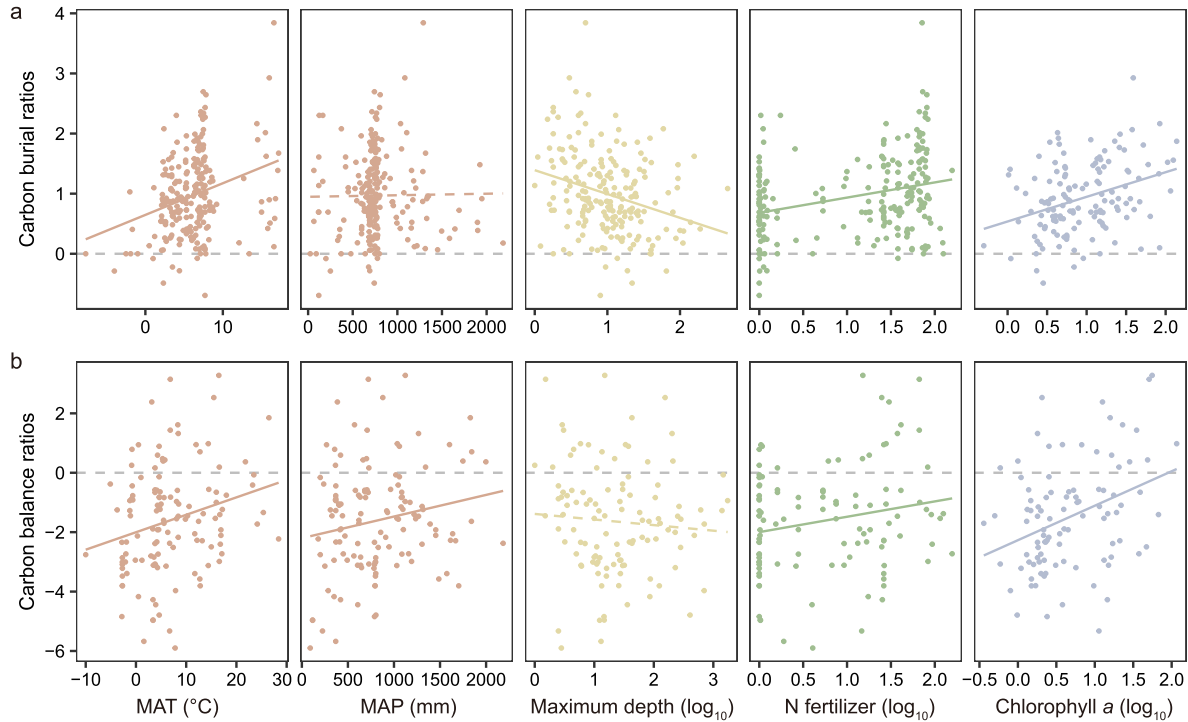


Fig. 4. Natural and anthropogenic drivers of organic carbon burial ratios and carbon balance ratios. MAT: mean annual temperature ($^{\circ}\text{C}$); MAP: mean annual precipitation (mm); Maximum depth: lake maximum depth (m); N fertilizer: nitrogen fertilizer use (kg/ha); Chlorophyll *a*: water chlorophyll *a* ($\mu\text{g/L}$). These environmental variables were selected as representatives of natural and anthropogenic drivers, with the remaining environmental variables presented in Fig. S5. (a) The linear models showed relationships between the carbon burial ratios and environmental drivers: MAT ($n = 228$, $R^2 = 0.08$), MAP ($n = 228$), Maximum depth ($n = 204$, $R^2 = 0.08$), N fertilizer ($n = 220$, $R^2 = 0.08$), and Chlorophyll *a* ($n = 136$, $R^2 = 0.11$). (b) The linear models showed relationships between the carbon balance ratios and environmental drivers: MAT ($n = 127$, $R^2 = 0.05$), MAP ($n = 127$, $R^2 = 0.03$), Maximum depth ($n = 111$), N fertilizer ($n = 107$, $R^2 = 0.03$), and Chlorophyll *a* ($n = 96$, $R^2 = 0.12$). Solid black lines indicate statistically significant linear models ($P \leq 0.05$), while dashed black lines indicate nonsignificant linear models ($P > 0.05$).

usually a proxy for water quality and lake trophic state. Specifically, chlorophyll *a* accounted for 44.79% of the explained variations, followed by MAT (43.54%) and MAP (6.01%) (Fig. 5a). For the carbon balance ratios, the total relative contributions of climate factors (i.e., MAT and MAP) were predominantly 53.82%. The other explanatory variables included lake catchment properties and trophic state, such as nitrogen fertilizer application (26.21%) and chlorophyll *a* (14.47%) (Fig. 5b).

To quantify the interactive effects of the multiple environmental variables on the lake carbon sink dynamics and the carbon sink-source balance, we applied SEM to statistically synthesize their hypothesized relationships [40] (Fig. 2c). Model performance statistics showed that the path analysis produced good models describing the carbon sink dynamics and carbon sink-source balance based on a nonsignificant Chi-square statistic, SRMR < 0.05, and CFI values > 0.95 (Table S6). These models explained 15.5% of the variation in lake carbon sink dynamics, while they accounted for 6.4% of the variation in carbon sink-source balance in the global lakes. It should be noted that the explained variations may not be as high as expected. This is largely because some potentially important variables, such as the lake trophic state, are not available for each lake in the literatures. Other variables, such as land-use change [15,16], may also influence the carbon sink dynamics and sink-source balance.

The predictors showed divergent effects on lake carbon sink dynamics and sink-source balance regarding their influence strength and directions (Fig. 6; Table S7). For the carbon sink dynamics, the lake trophic state and catchment properties showed similar important direct effects ($R = 0.221$ and 0.236 , respectively), while lake catchment properties had a strong indirect effect ($R = 0.108$) and a total effect of 0.344. Furthermore, we found that climate variables and lake morphometry

also showed indirect influences on the carbon sink dynamics via the interactions with lake trophic state, with total indirect effects of 0.221 and 0.116, respectively. For the carbon sink-source balance, lake catchment properties exhibited the most significant direct effect of 0.253. The climate variables mainly showed an indirect influence of 0.205 on the lake carbon balance via the interactions with catchment properties. Such divergent effects of multiple environmental variables were statistically supported by random forest analyses (Fig. 5). For instance, chlorophyll *a*, an indicator of lake trophic state, accounted for 44.79% of the explained variations in carbon sink dynamics, while nitrogen fertilizer application, reflecting lake catchment properties, accounted for 26.21% of the explained variations in carbon sink-source balance.

4. Discussion

Lakes become increasingly important for carbon burial especially under the joint effects of global warming and escalated anthropogenic activities [12,13]. While the long-term storage of organic carbon is frequently documented [45,15,7], there are few reports on the quantification of temporal changes in the organic carbon burial rates for individual lake on a global scale. It is also unclear how much greenhouse gas emissions could be offset by organic carbon burial in global lakes. This further limit our comprehensive understanding of the spatial distribution of the temporal changes in carbon burial and the balance between carbon burial and greenhouse gas emissions, and also the environmental factors that influence them. Here, we developed the carbon burial ratios to quantify the temporal changes in carbon burial, i.e., carbon sink dynamics. We then applied the carbon balance ratios to quantify the balance between carbon burial and CO_2 emissions, i.e., carbon sink-

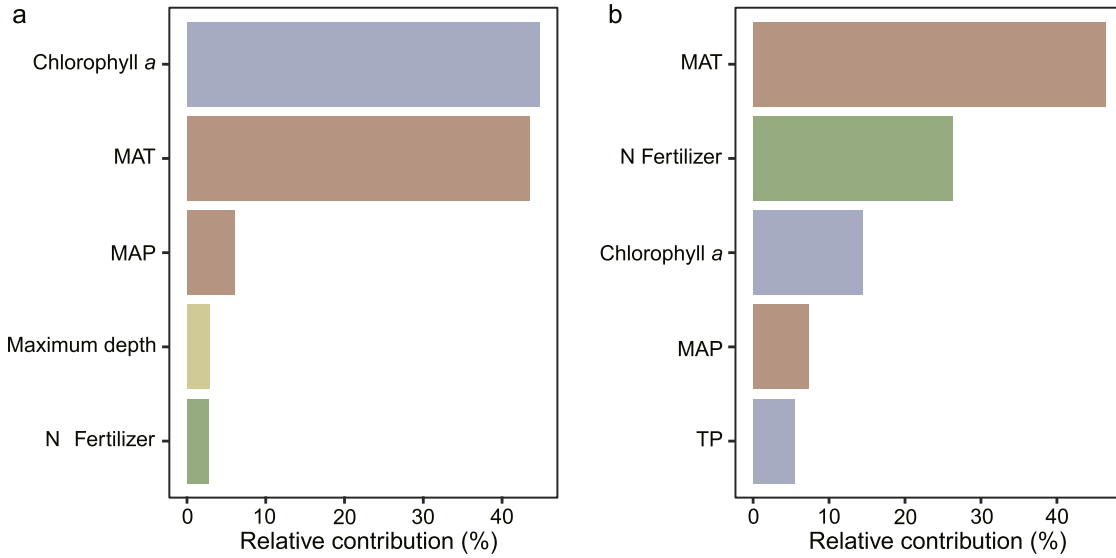


Fig. 5. Relative importance of environmental variables that influence carbon burial ratios (a) and carbon balance ratios (b) in random forest models. Environmental variables are colored by class: climate variables, lake morphometry, lake catchment properties, and lake trophic state. MAT: mean annual temperature (°C); MAP: mean annual precipitation (mm); Maximum depth: lake maximum depth (m); N fertilizer: nitrogen fertilizer use (kg/ha); Chlorophyll a: water Chlorophyll a (µg/L); TP: Total phosphorus (µg/L).

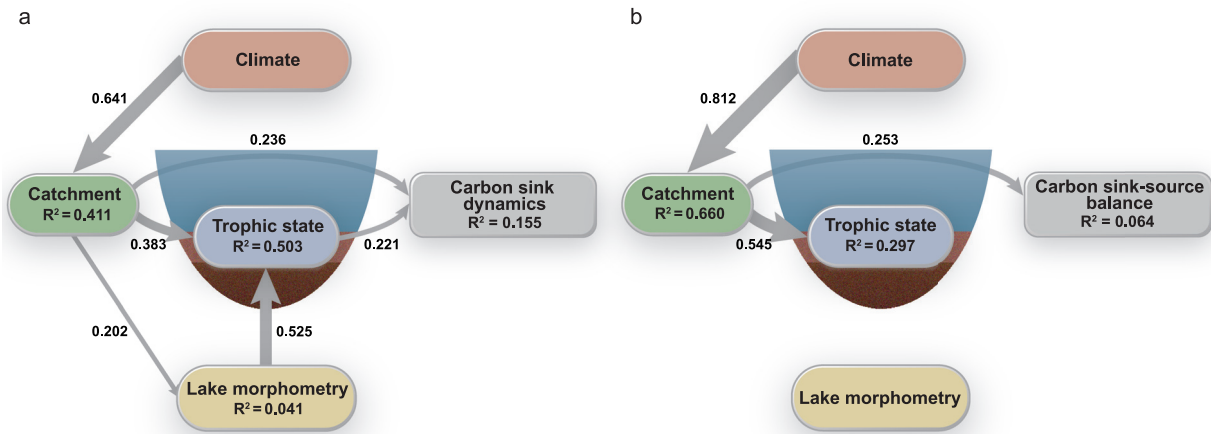


Fig. 6. Structural equation models to explain carbon sink dynamics (a) and carbon sink-source balance (b). The carbon sink dynamics and carbon sink-source balance were quantified with carbon burial ratios and carbon balance ratios, respectively. Response variables are displayed within grey boxes and include carbon sink dynamics and carbon sink-source balance. Predictor variables are colored by driver class: climate variables, lake morphometry, lake catchment properties, and lake trophic state. R^2 denotes the proportion of variance explained for endogenous variables. Arrows between variables represent statistically significant standardized direct effects. Arrow widths and accompanying numbers are the relative effects (that is, standardized path coefficients) of modeled relationships. Composite and observed variables are indicated in ovals and rectangles, respectively. More details on the model fit are summarized in Tables S6, S7.

source balance. Finally, we constructed the statistical models with hierarchical drivers to explain the spatial patterns observed in these two metrics.

4.1. Carbon sink dynamics and carbon sink-source balance in lakes

Our study is among the very first ones to examine the temporal changes in organic carbon burial rates across global lakes, referred to as carbon sink dynamics, and further explore the environmental drivers underlying the temporal changes. The increased magnitude in burial rates from pre-1900 to post-1950 in China was lower than those observed in Europe and the USA. This may be attributed to the larger lake size of collected lakes in China compared to those in Europe and the USA, which might have reduced the impact of anthropogenic disturbance on the organic carbon burial [46]. In addition, the lakes, located in Mongolia-Xinjiang Plateau and Qinghai-Tibetan Plateau in China,

were relatively unaffected by anthropogenic activity, and exhibited a lower increased magnitude in burial rates [46]. However, the increased ratios in burial rates of China, as indicated by the carbon burial ratios, were similar to those of the other regions (Fig. S1d). It should be noted that the above increased magnitudes are less comparable across lakes largely due to their differences in background burial rates across different regions worldwide. Thus, the carbon burial ratio, as an effect-size metric that disregards the background, could be used to directly compare the increase ratios of carbon burial rates in individual lakes worldwide.

The organic carbon burial ratios indicated that organic carbon burial rates have increased by average 2.45 times since 1900. The observed increase ratio in organic carbon burial is similar to those reported in another global study, which showed that burial rates have tripled across all biomes over the last 100 years [7]. However, the observed increase ratio exceeds the average values reported in previous studies

from similar regions, such as 1.58 in North America [13], 2.20 in Europe [18], and 2.00 in China [46]. Although our study focuses on the temporal changes in burial rates, the observed increase ratio is comparable to the increased magnitude of organic carbon burial. For instance, carbon burial in global lakes has increased from 0.05 to 0.12 Pg C yr⁻¹ (that is, a 1.40-fold increase) over the last 100 years [7], and inland waters have experienced an increase from 0.05 Pg C yr⁻¹ in the pre-industrial era to 0.15 Pg C yr⁻¹ at present (that is, a 2.00-fold increase) [47].

On average, the carbon balance ratios was -1.60 across the global lakes, which is similar to those of boreal and subarctic-arctic lakes in Scandinavia with a range from -1.39 to -4.45 and a mean of -3.40 [21], but substantially lower than those for temperate lakes and reservoirs in Conterminous United States (mean = 0.33) [48]. Furthermore, we found that lakes in temperate biomes, such as temperate grasslands, savannas and shrublands, exhibited relatively higher carbon balance ratios (Fig. S4). This phenomenon is consistent with the fact that temperate lakes are relatively effective at sequestering carbon [48]. It should be noted that our calculation of the above ratios considered only CO₂ emissions but not CH₄ emissions. This is mainly because CO₂ emissions are more readily available than CH₄ in the literature, and CH₄ emission is less important in terms of only C units [25]. Considering the stronger greenhouse effect of CH₄ [49] and the revealed carbon balance ratios, we expected that lakes should have a higher potential to act as sources for releasing carbon.

4.2. Latitudinal patterns for the carbon burial ratios and carbon balance ratios

Towards higher latitudes, we observed a decrease in the temporal changes of organic carbon burial rates since 1900. This is supported by the fact that the organic carbon burial ratios showed a significantly negative latitudinal trend across global lakes. Such a latitudinal pattern is rarely reported in previous literature for the temporal changes of organic carbon burial rates, except for the organic carbon burial rates [7,13]. For instance, the organic carbon burial rates are negatively correlated with latitude in a suite of northern lakes [13]. When more lakes were included such as the low-latitude lakes from China, however, the carbon burial rates consistently showed increasing latitudinal trends for the global lakes in both periods of post-1950 and pre-1900 (Fig. 3a). These results suggest that there is a clear discrepancy in the geographical variations between the carbon burial rates and their temporal changes. The quantification of the temporal changes in carbon burial rate of each lake could provide novel information on how the lakes could contribute to the future regional carbon sink in a global scale.

In contrast, the carbon sink-source balance exhibited no clear latitudinal trends in the global lakes. This is supported by the nonsignificant relationship between latitude and the carbon balance ratios (Fig. 3d). Such a latitudinal pattern is unexpected as there are previous reports frequently showing latitudinal differences in the balance between CO₂ emissions and carbon burial. For instance, when two regions are compared, the average ratio of emission to burial is substantially higher in boreal lakes than in subarctic-arctic lakes [21,23]. However, when the global lakes were considered, such as including the tropical and temperate lakes, there were nonsignificant latitudinal trends for the carbon balance ratios (Fig. 3d). These results collectively suggest that in addition to climate variables, local factors, such as the specific ecological and environmental conditions unique to each region, could also be crucial drivers of carbon sink-source balance. The heterogeneity of data sources for organic carbon burial and CO₂ emissions may contribute to the nonsignificant latitudinal trends for the carbon balance ratios. The integration of a more comprehensive assessment of lake carbon burial and emissions, along with increased spatial and temporal coverage, is thus encouraged in future studies to enhance our understanding of carbon sink-source balance.

4.3. The effects of natural and anthropogenic drivers on organic carbon sink dynamics

Organic carbon burial in lake sediments is generally controlled by three primary processes: autochthonous production, inputs of allochthonous carbon from catchment areas, and mineralization within both the water column and sediments [8]. Across global lakes, we find that the increased ratios in organic carbon burial were directly attributed to the increase in autochthonous production and indirectly influenced by the transport and subsequent deposition of terrestrial organic matter into lake sediments.

Our results firstly indicate that the increased ratios of organic carbon burial rates were primarily driven by lake trophic state during the Anthropocene. This is supported by the positive relationships between organic carbon burial ratios and lake total phosphorus and chlorophyll *a* (Figs. 4a and S5a). It should be noted that carbon burial rates, rather than carbon burial ratios, are the focus in previous studies, but are also shown to be influenced by lake trophic state. For instance, the recent 10-year carbon burial rates and the mean burial rates during the period 1950-1990 were primarily driven by cultural eutrophication, i.e., total phosphorus, in European mesotrophic to eutrophic lakes [18]. The lake carbon burial rates for post-1950 were positively correlated with in-lake total phosphorus in Yunnan-Guizhou Plateau while with the total nitrogen in East Plain in China [46]. Such effects of nutrients on carbon burial rates could be attributed to the enhanced autochthonous organic matter production due to the continuous increase of in-lake total phosphorus and the total nitrogen concentration and subsequent sedimentation [32]. Collectively, we show here that lake trophic state could influence not only carbon burial rates but also the organic carbon burial changes since 1900, which is especially true regarding chlorophyll *a* (Figs. 4a, 5a), and indicates that lakes with higher trophic states would have higher organic carbon burial increases.

Secondly, the increased ratios of organic carbon burial in lake sediments were also influenced by lake catchment properties, such as fertilizer usage, which reflects the intensified agricultural activities (Fig. 4a). This suggests that organic carbon burial ratios are determined not only by in-lake nutrient availability and primary productivity, but are also influenced by terrestrial carbon inputs [50]. For instance, lakes eutrophicated with fertile agricultural catchments accumulate more organic carbon than those surrounded by undeveloped catchments [51]. The contemporary organic carbon burial rates in lakes of both the Minnesotan region and the Yangtze floodplain are primarily controlled by the intensification of agriculture within their respective catchments [15,17]. Intensive agriculture is the main source of soil erosion, leading to the transport of sediments, terrestrial organic carbon, and nutrients to inland waters [50]. This may therefore enhance organic carbon burial both directly through the high delivery and effective preservation of terrestrially derived organic carbon, and indirectly through nutrient enrichment (eutrophication) by stimulating aquatic productivity and thus the sedimentation of aquatic organic carbon [15,32,45]. In contrast, the NDVI in the lake catchment exhibited a distinct negative relationship with organic carbon burial ratios (Fig. S5a). This pattern suggests that higher vegetation cover might mitigate the effects of agricultural activities on organic carbon burial. This could be explained by the fact that extensive vegetation cover tends to reduce soil erosion and consequently decrease the amount of carbon eroded from the soil and delivered to aquatic ecosystems [52]. While the rate of land-cover conversion has decelerated in temperate regions, the intensification of agriculture in less developed regions is expected to continue to meet future food demands [53]. The intensification of agriculture, coupled with increased soil erosion and sedimentation, could lead to the reinforcement of the lake carbon sink.

Finally, the increased ratios of organic carbon burial were also positively affected by climate variables, such as mean annual temperature. This is consistent with previous reports that the temperature at the regional scale exerts a weak but positive impact on lake organic carbon

burial [13], although warmer water temperatures could lead to more mineralization and less organic carbon burial as suggested by experimental incubations of boreal lake sediments [14]. Temperature increase may result in enhanced aquatic primary productivity and increase the amount of organic carbon produced within lakes' basins [54,55]. Moreover, climate warming could exhibit stronger effect by disrupting catchment hydrological budgets, consequently affecting the delivery of both terrestrial carbon and nutrients to lakes [56,57]. However, lake organic carbon burial ratios were negatively affected by lake morphometry, which is supported by the negative relationships between organic carbon burial ratios and lake maximum depth (Figs. 4a and S5a). This is consistent with the fact that shallower lakes could have greater burial efficiency at temperate and high latitudes [58].

4.4. The effects of natural and anthropogenic drivers on carbon sink-source balance

The carbon sink-source balance was primarily affected by lake catchment properties and climate variables. Since the carbon sink-source balance is quantified based on the comparison of organic carbon burial to CO₂ emissions, lake catchment properties and climate variables could influence the balance by affecting both organic carbon burial and CO₂ emissions. The application of nitrogen and phosphorus fertilizers could result in regional differences in nutrient availability, which appear to have influences on the carbon sink-source balance, as higher nutrient levels generally stimulate CO₂ fixation and net ecosystem production [23]. This would lead to a decrease in net CO₂ evasion and an increase in carbon accumulation in sediments [21], thereby increasing carbon balance ratios. For instance, carbon accumulation has been shown to be very rapid, whereas pH is generally high resulting in relatively small

CO₂ evasion in heavily loaded agricultural lakes [51,59]. In addition, nitrogen fertilizer use may influence the carbon sink-source balance by increasing nitrogen deposition in lake sediments, as sediment nitrogen pool is positively linked to carbon accumulation/evasion ratio in boreal lakes [21].

Climate variables, including temperature and precipitation, are also crucial variables that influence the carbon sink-source balance. Temperature could affect both the mineralization and burial of carbon by influencing aquatic respiration and primary production [60]. Increasing temperature could stimulate algal growth and lead to the increase of primary production, thereby promoting the organic carbon burial in lake sediment [45]. It could also accelerate heterotrophic respiration rates, increase CO₂ emissions, and decrease the burial efficiency of organic matter after sedimentation [14]. The differential temperature dependence of photosynthesis and respiration may lead to the positive relationship between carbon balance ratios and mean annual temperature in our study (Fig. 4b). Temperature and precipitation also have an indirect effect on lake's carbon cycle through their influence on terrestrial carbon fixation and the subsequent carbon leaching to the lake [61]. For instance, precipitation could increase terrestrial inputs of nutrients and organic matter [62] that may further promote lake production, thus leading to an increase in carbon burial and a decrease CO₂ emission.

4.5. Future perspectives

We propose future perspectives aimed at increasing the accuracy of future estimates regarding global carbon sink dynamics and carbon sink-source balance, and enhancing the explanation of these dynamics and the balance (Fig. 7). 1) Data types. Incorporating both inorganic car-

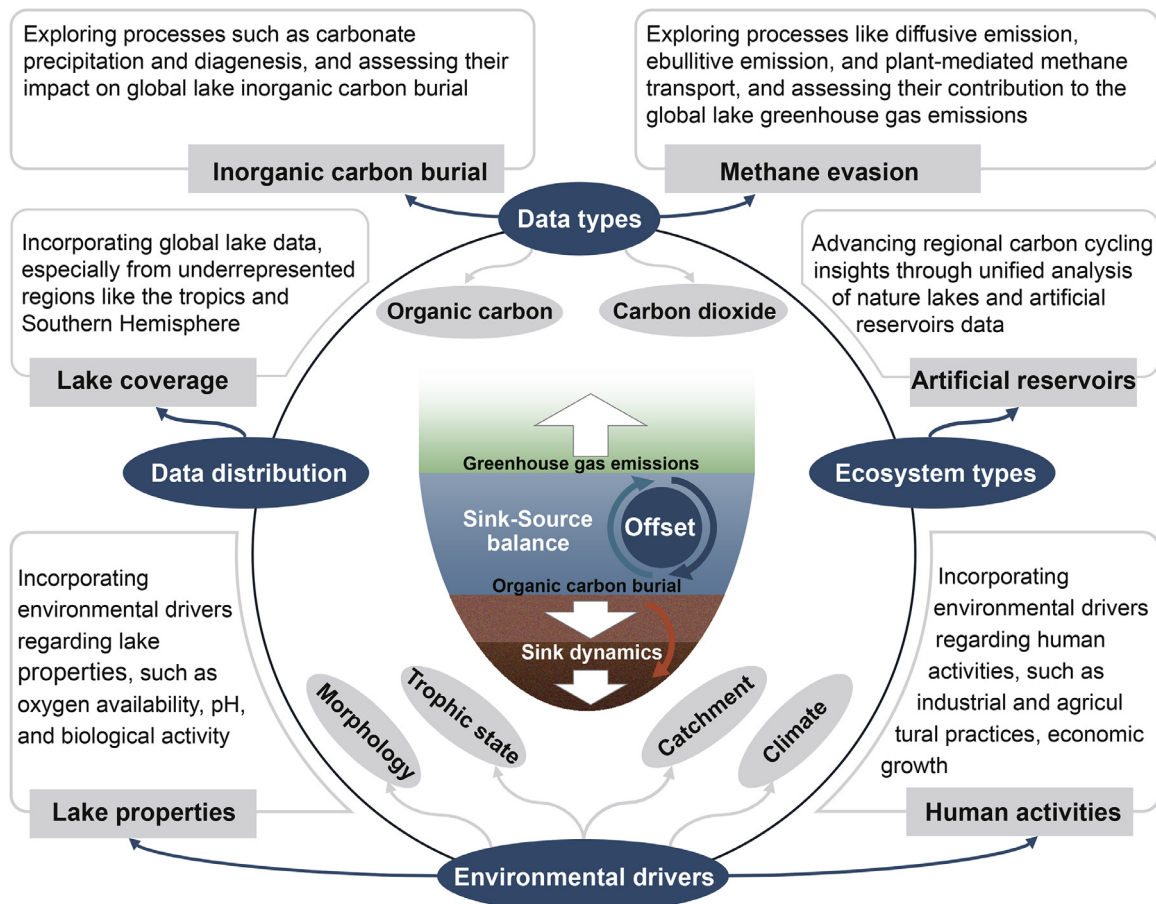


Fig. 7. Future perspectives on the study of carbon sink dynamics and carbon sink-source balance. The aim of these perspectives is to enhance the accuracy of estimates concerning carbon sink dynamics and carbon sinks-source balance worldwide, and to provide a more comprehensive explanation of these dynamics and balance.

bon burial and methane evasion is essential for accurately assessing carbon sink dynamics and carbon sink-source balance. While organic carbon burial remains the dominant process in most lakes, inorganic carbon burial processes, including carbonate precipitation and diagenesis, also significantly contributes to carbon sinks in closed lake basins located in arid and semi-arid regions. Additionally, the quantification of methane evasion, such as diffusive emission, ebullitive emission, and plant-mediated methane transport, is crucial due to methane's potent greenhouse effect, enabling a deeper understanding of their potential to influence the carbon sink-source balance. 2) Data distribution. While recent studies have indicated higher organic carbon burial in humid tropical forest lakes [7,27], current observational data predominantly focus on lakes in northern latitudes. More systematic studies in under-represented regions and ecosystems, particularly those at low latitude and within the global south, is crucial to mitigate data scarcity for the assessment of carbon sink dynamics and carbon sink-source balance. Including lake ecosystems across distinct climates, typologies, and the full latitudinal range, along with a more realistic natural lake area estimate, will further improve future estimates of global carbon fluxes. 3) Ecosystem types. Carbon burial assessments would also profit from further investigations in reservoirs and eutrophic systems, such as agricultural ponds, given their significant contribution to global carbon sinks, and due to the likelihood that these systems will become even more abundant in the future. 4) Environment drivers. To explain the global lake carbon sink dynamics and carbon sink-source balance more comprehensively, it's crucial to include a broader range of variables. These should encompass key lake properties, such as oxygen availability, pH, and biological activity, and diverse human activities, such as industrial and agricultural practices and economic growth. 5) The offset of carbon burial to greenhouse gas emissions. The carbon burial ratios and carbon balance ratios offer a valuable framework for quantifying carbon sink dynamics and assessing their ability to offset carbon sources in local lakes. Utilizing these ratios could lead to a more detailed and accurate evaluation of the role of carbon burial in offsetting global greenhouse gas emissions, particularly when this evaluation is based on local rather than global average data.

5. Conclusion

Lakes play a critical role in the global carbon cycle by burying carbon in sediments and emitting greenhouse gas into the atmosphere. Lakes become increasingly important for carbon burial during the Anthropocene, but there has been little consideration of temporal change in organic carbon burial across global lakes. It also remains uncertain how much greenhouse gas emissions could be offset by organic carbon burial. In this study, we developed and applied effect-size metrics, including the carbon burial ratio and the carbon balance ratio, for each lake to quantify the temporal change of lake carbon burial, the balance between organic carbon burial and greenhouse gas emissions, and the relative importance of natural and anthropogenic drivers. Our findings indicate that most lakes have consistently increased organic carbon burial during the Anthropocene but still exhibit lower organic carbon burial rates than carbon emission rates, acting as carbon sources rather than carbon sinks in the regional carbon cycling. Moreover, our results demonstrate that the lake trophic state exerts significant control over lake carbon sink dynamics, while lake catchment properties determine carbon sink-sources. These findings highlight the need of climate and anthropogenic-induced changes to be considered as integrated drivers of lake organic carbon burial and greenhouse gas emissions under global change.

Data availability

The datasets of global lake carbon burial and CO₂ emission rates collected in this study are available in the NODE (<https://www.biosino.org/node>) with access number OEP004967.

Author contributions

JW designed the study. FM and HW collected and analyzed the data with contributions from JW and AH. FM and JW finished the first draft. JW, AH and FM finalised the manuscript with contributions from KJ, BL, TG, and QW.

Declaration of competing interest

The authors declare that they have no conflicts of interest in this work.

Acknowledgments

This study was supported by the National Natural Science Foundation of China (42225708, 92251304), the Second Tibetan Plateau Scientific Expedition and Research Program (2019QZKK0503), Research Program of Sino-Africa Joint Research Center, Chinese Academy of Sciences (151542KYSB20210007). We appreciate Mzuka Hellen Lucas for kind help in revising the manuscript. We appreciate Yongqin Liu, Xiancai Lu, Li Huang, and Guoping Zhao for kind supports and comments.

Supplementary materials

Supplementary material associated with this article can be found, in the online version, at [doi:10.1016/j.fmre.2024.04.018](https://doi.org/10.1016/j.fmre.2024.04.018).

References

- [1] C. Verpoorter, T. Kutser, D.A. Seekell, et al., A global inventory of lakes based on high-resolution satellite imagery, *Geophys. Res. Lett.* 41 (2014) 6396–6402.
- [2] F.E. Muller-Karger, R. Varela, R. Thunell, et al., The importance of continental margins in the global carbon cycle, *Geophys. Res. Lett.* 32 (2005) L01602.
- [3] J.P. Dunne, J.L. Sarmiento, A. Gnanadesikan, A synthesis of global particle export from the surface ocean and cycling through the ocean interior and on the seafloor, *Glob. Biogeochem. Cycle* 21 (2007) GB4006.
- [4] J.A. Bradley, D. Hulse, D.E. LaRowe, et al., Transfer efficiency of organic carbon in marine sediments, *Nat. Commun.* 13 (2022) 7297.
- [5] T. DelSontro, J.J. Beaulieu, J.A. Downing, Greenhouse gas emissions from lakes and impoundments: Upscaling in the face of global change, *Limnol. Oceanogr. Lett.* 3 (2018) 64–75.
- [6] W.E. Dean, E. Gorham, Magnitude and significance of carbon burial in lakes, reservoirs, and peatlands, *Geology* 26 (1998) 535–538.
- [7] N.J. Anderson, A.J. Heathcote, D.R. Engstrom, et al., Anthropogenic alteration of nutrient supply increases the global freshwater carbon sink, *Sci. Adv.* 6 (2020) eaaw2145.
- [8] J.J. Cole, Y.T. Prairie, N.F. Caraco, et al., Plumbing the global carbon cycle: integrating inland waters into the terrestrial carbon budget, *Ecosystems* 10 (2007) 171–184.
- [9] A.K. Aufdenkampe, E. Mayorga, P.A. Raymond, et al., Riverine coupling of biogeochemical cycles between land, oceans, and atmosphere, *Front. Ecol. Environ.* 9 (2011) 53–60.
- [10] D.H. Ehhalt, The atmospheric cycle of methane, *Tellus* 26 (1974) 58–70.
- [11] J.A. Rosentreter, A.V. Borges, B.R. Deemer, et al., Half of global methane emissions come from highly variable aquatic ecosystem sources, *Nat. Geosci.* 14 (2021) 225–230.
- [12] L.J. Tranvik, J.A. Downing, J.B. Cotner, et al., Lakes and reservoirs as regulators of carbon cycling and climate, *Limnol. Oceanogr.* 54 (2009) 2298–2314.
- [13] A.J. Heathcote, N.J. Anderson, Y.T. Prairie, et al., Large increases in carbon burial in northern lakes during the Anthropocene, *Nat. Commun.* 6 (2015) 10016.
- [14] C. Gudas, D. Bastviken, K. Steger, et al., Temperature-controlled organic carbon mineralization in lake sediments, *Nature* 466 (2010) 478–481.
- [15] N.J. Anderson, R.D. Dietz, D.R. Engstrom, Land-use change, not climate, controls organic carbon burial in lakes, *Proc. R. Soc. B-Biol. Sci.* 280 (2013) 20131278.
- [16] R.D. Dietz, D.R. Engstrom, N.J. Anderson, Patterns and drivers of change in organic carbon burial across a diverse landscape: insights from 116 Minnesota lakes, *Glob. Biogeochem. Cycle* 29 (2015) 708–727.
- [17] X.H. Dong, N.J. Anderson, X.D. Yang, et al., Carbon burial by shallow lakes on the Yangtze floodplain and its relevance to regional carbon sequestration, *Glob. Change Biol.* 18 (2012) 2205–2217.
- [18] N.J. Anderson, H. Bennion, A.F. Lotter, Lake eutrophication and its implications for organic carbon sequestration in Europe, *Glob. Change Biol.* 20 (2014) 2741–2751.
- [19] A. Hu, M. Choi, A.J. Tanentzap, et al., Ecological networks of dissolved organic matter and microorganisms under global change, *Nat. Commun.* 13 (2022) 3600.
- [20] J. Jia, J.A.J. Dungait, Y. Lu, et al., Inland water metabolic carbon processes and associated biological mechanisms that drive carbon source-sink instability, *Innov. Geosci.* 1 (2023) 100035.

- [21] P. Kortelainen, M. Rantakari, H. Pajunen, et al., Carbon evasion/accumulation ratio in boreal lakes is linked to nitrogen, *Glob. Biogeochem. Cycle* 27 (2013) 363–374.
- [22] H. Yang, Y. Xing, P. Xie, et al., Carbon source/sink function of a subtropical, eutrophic lake determined from an overall mass balance and a gas exchange and carbon burial balance, *Environ. Pollut.* 151 (2008) 559–568.
- [23] E.J. Lundin, J. Klaminder, D. Bastviken, et al., Large difference in carbon emission-burial balances between boreal and arctic lakes, *Sci. Rep.* 5 (2015) 14248.
- [24] P.A. Raymond, J. Hartmann, R. Lauerwald, et al., Global carbon dioxide emissions from inland waters, *Nature* 503 (2013) 355–359.
- [25] R. Mendonca, R.A. Muller, D. Clow, et al., Organic carbon burial in global lakes and reservoirs, *Nat. Commun.* 8 (2017) 1694.
- [26] C. Gudasz, S. Sobek, D. Bastviken, et al., Temperature sensitivity of organic carbon mineralization in contrasting lake sediments, *J. Geophys. Res.-Biogeosci.* 120 (2015) 1215–1225.
- [27] L. Amora-Nogueira, C.J. Sanders, A. Enrich-Prast, et al., Tropical forests as drivers of lake carbon burial, *Nat. Commun.* 13 (2022) 4051.
- [28] P.A. Whittaker, *Communities and ecosystems*, 2nd edition, MacMillan Publishing Co, New York, 1975.
- [29] M.E. Ferland, Y.T. Prairie, C. Teodoru, et al., Linking organic carbon sedimentation, burial efficiency, and long-term accumulation in boreal lakes, *J. Geophys. Res.-Biogeosci.* 119 (2014) 836–847.
- [30] W. Steffen, J. Crutzen, J.R. McNeill, The Anthropocene: are humans now overwhelming the great forces of Nature? *Ambio* 36 (2007) 614–621.
- [31] W. Steffen, W. Broadgate, L. Deutsch, et al., The trajectory of the Anthropocene: The great acceleration, *Anthropocene Rev.* 2 (2015) 81–98.
- [32] F.S. Pacheco, F. Roland, J.A. Downing, Eutrophication reverses whole-lake carbon budgets, *Inland Waters* 4 (2014) 41–48.
- [33] S.E. Fick, R.J. Hijmans, *WorldClim 2: New 1-km spatial resolution climate surfaces for global land areas*, *Int. J. Climatol.* 37 (2017) 4302–4315.
- [34] N. Valiente, A. Eiler, L. Allesson, et al., Catchment properties as predictors of greenhouse gas concentrations across a gradient of boreal lakes, *Front. Environ. Sci.* 10 (2022) 880619.
- [35] P. Potter, N. Ramankutty, E.M. Bennett, et al., Characterizing the spatial patterns of global fertilizer application and manure production, *Earth Interact* 14 (2010) 1–22.
- [36] Didan. MODIS/Terra vegetation indices 16-Day L3 global 250m SIN grid V061 (data set), NASA EOSDIS land processes DAAC (2021). <https://landsweb.modaps.eosdis.nasa.gov/missions-and-measurements/products/MOD13Q1#overview>.
- [37] P. Ji, J. Chen, R. Chen, et al., Nitrogen and phosphorus trends in lake sediments of China may diverge, *Nat. Commun.* 15 (2024) 2644.
- [38] A. Filazzola, O. Mahdian, A. Shuvo, et al., A database of chlorophyll and water chemistry in freshwater lakes, *Sci. Data* 7 (2020) 310.
- [39] L. Breiman, *Random forests*, *Mach. Learn.* 45 (2001) 5–32.
- [40] J.B. Grace, D.R. Schoolmaster Jr, G.R. Guntenspergen, et al., Guidelines for a graph-theoretic implementation of structural equation modeling, *Ecosphere* 3 (2012) 73.
- [41] H. Ishwaran, U.B. Kogalur, Fast unified random forests for survival, regression, and classification (RF-SRC), R package version 3.2.3, 2023 <https://www.randomforestsrc.org/>.
- [42] J.B. Grace, T.M. Anderson, E.W. Seabloom, et al., Integrative modelling reveals mechanisms linking productivity and plant species richness, *Nature* 529 (2016) 390–393.
- [43] J.B. Grace, T.M. Anderson, H. Olf, et al., On the specification of structural equation models for ecological systems, *Ecol. Monogr.* 80 (2010) 67–87.
- [44] Y. Rosseel, lavaan: An R package for structural equation modeling, *J. Stat. Softw.* 48 (2012) 1–36.
- [45] A.J. Heathcote, J.A. Downing, Impacts of eutrophication on carbon burial in freshwater lakes in an intensively agricultural landscape, *Ecosystems* 15 (2012) 60–70.
- [46] M. Wang, J. Wu, H. Chen, et al., Temporal-spatial pattern of organic carbon sequestration by Chinese lakes since 1850, *Limnol. Oceanogr.* 63 (2018) 1283–1297.
- [47] P. Regnier, L. Resplandy, R.G. Najjar, et al., The land-to-ocean loops of the global carbon cycle, *Nature* 603 (2022) 401–410.
- [48] D.W. Clow, S.M. Stackpoole, K.L. Verdin, et al., Organic carbon burial in lakes and reservoirs of the conterminous United States, *Environ. Sci. Technol.* 49 (2015) 7614–7622.
- [49] D. Bastviken, L.J. Tranvik, J.A. Downing, et al., Freshwater methane emissions offset the continental carbon sink, *Science* 331 (2011) 50.
- [50] J.N. Quinton, G. Govers, K. Van Oost, et al., The impact of agricultural soil erosion on biogeochemical cycling, *Nat. Geosci.* 3 (2010) 311–314.
- [51] J.A. Downing, J.J. Cole, J.J. Middelburg, et al., Sediment organic carbon burial in agriculturally eutrophic impoundments over the last century, *Glob. Biogeochem. Cycle* 22 (2008) GB1018.
- [52] M. Woo, S. Luk, Vegetation effects on soil and water losses on weathered granitic hillslopes, south China, *Phys. Geogr.* 11 (1990) 1–16.
- [53] J.A. Downing, Y.T. Prairie, J.J. Cole, et al., The global abundance and size distribution of lakes, ponds, and impoundments, *Limnol. Oceanogr.* 51 (2006) 2388–2397.
- [54] T. Maavara, R. Lauerwald, P. Regnier, et al., Global perturbation of organic carbon cycling by river damming, *Nat. Commun.* 8 (2017) 15347.
- [55] A. Woods, D.T. Rodbell, M.B. Abbott, et al., Andean drought and glacial retreat tied to Greenland warming during the last glacial period, *Nat. Commun.* 11 (2020) 5135.
- [56] G.A. Weyhenmeyer, J. Karlsson, Nonlinear response of dissolved organic carbon concentrations in boreal lakes to increasing temperatures, *Limnol. Oceanogr.* 54 (2009) 2513–2519.
- [57] J. Clark, S. Bottrell, C. Evans, et al., The importance of the relationship between scale and process in understanding long-term DOC dynamics, *Sci. Total Environ.* 408 (2010) 2768–2775.
- [58] S.R. Alin, T.C. Johnson, Carbon cycling in large lakes of the world: A synthesis of production, burial, and lake-atmosphere exchange estimates, *Glob. Biogeochem. Cycle* 21 (2007) GB3002.
- [59] M.B. Balmer, J.A. Downing, Carbon dioxide concentrations in eutrophic lakes: Undersaturation implies atmospheric uptake, *Inland Waters* 1 (2011) 125–132.
- [60] M. Velthuis, S. Kosten, R. Aben, et al., Warming enhances sedimentation and decomposition of organic carbon in shallow macrophyte-dominated systems with zero net effect on carbon burial, *Glob. Change Biol.* 24 (2018) 5231–5242.
- [61] S. Sobek, L.J. Tranvik, J.J. Cole, Temperature independence of carbon dioxide supersaturation in global lakes, *Glob. Biogeochem. Cycle* 19 (2005) GB2003.
- [62] T. Greaver, C. Clark, J. Compton, et al., Key ecological responses to nitrogen are altered by climate change, *Nat. Clim. Chang.* 6 (2016) 836–843.



Jianjun Wang is a professor in Nanjing Institute of Geography and Limnology, Chinese Academy of Sciences. His research focus on aquatic environmental microbiology and biogeochemistry. He has published over 120 papers such as the journals of *Nature Communications*, the *ISME Journal*, *New Phytologist*, *Global Ecology and Biogeography*, and *Environmental Science & Technology*. He received the National Science Fund for Distinguished Young Scholars, and the Jiangsu Science and Technology Award. He is serving as an associated editor or editor board member in six journals such as *Functional Ecology*, the *ISME Journal*, and *Global Change Biology*.



Fanfan Meng is a PhD student under the supervision of Prof. Jianjun Wang in Nanjing Institute of Geography and Limnology, Chinese Academy of Sciences. His research interests are lake carbon cycle and the relationship between dissolved organic carbon and aquatic microbes.



Ang Hu is an associate professor in Nanjing Institute of Geography and Limnology, Chinese Academy of Sciences. Her research interests include environmental microbial ecology and dissolved organic carbon in aquatic ecosystems.